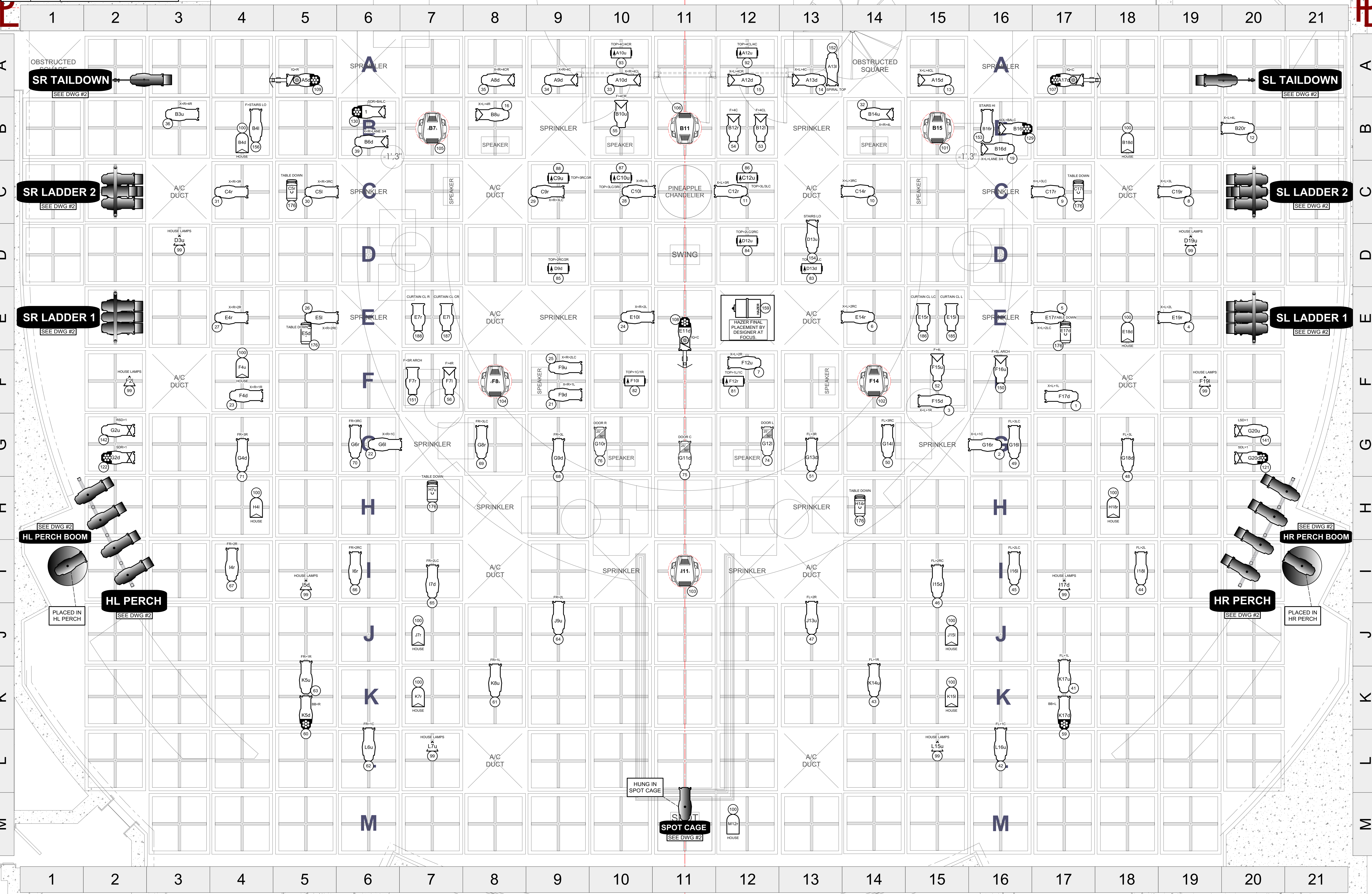
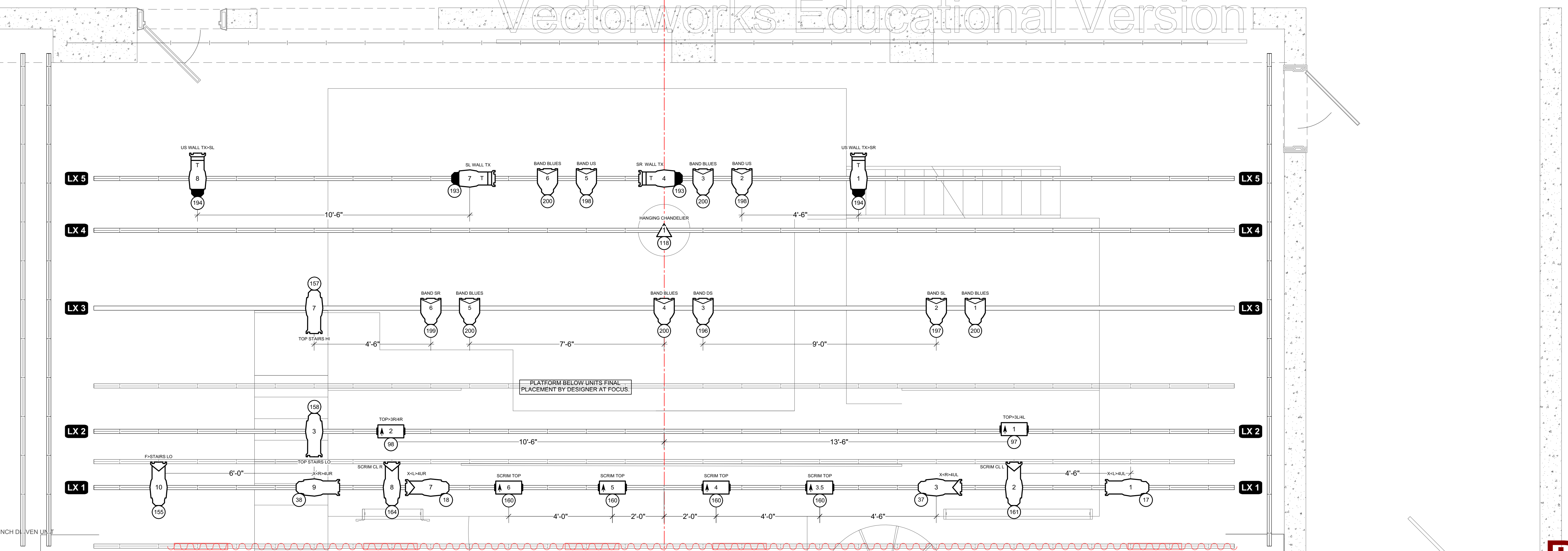
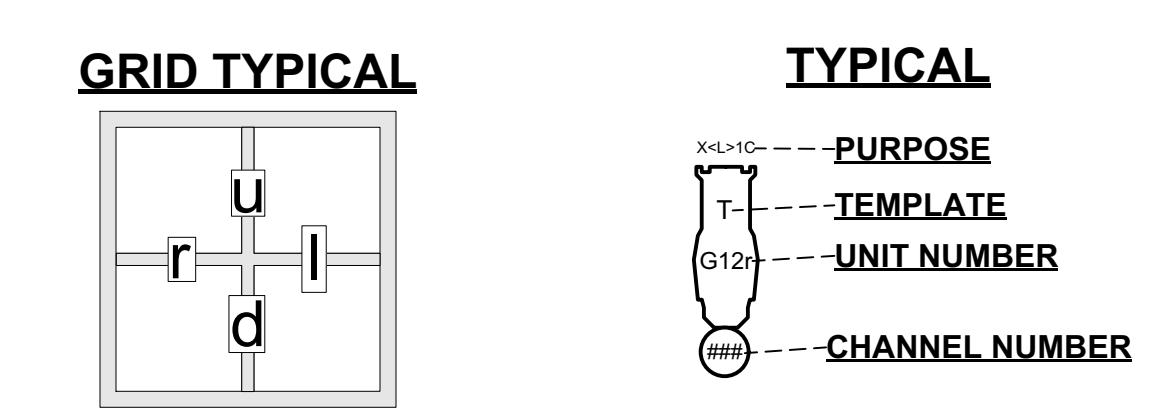


| LINESET # | TRIM | DESCRIPTION |
|-----------|--------|-----------------------|
| TAB | | OFFSTAGE SR TAB |
| 16 | | EMPTY |
| 15 | | EMPTY |
| 14 | | EMPTY |
| 13 | 24'-3" | ELECTRIC 5 |
| 12 | | EMPTY |
| 11 | 23'-0" | ELECTRIC 4/CHANDELIER |
| 10 | | EMPTY |
| TAB | | ONSTAGE SR TAB |
| 9 | | EMPTY |
| 8 | 21'-6" | ELECTRIC 3 |
| 7 | | EMPTY |
| 6 | | EMPTY |
| 5 | | SIDE SCRIMS |
| 4 | | EMPTY |
| 3 | 20'-0" | ELECTRIC 2 |
| TAB | | SL TAB |
| 2 | | CENTER SCRIM |
| 1 | 19'-3" | ELECTRIC 1 |
| 0 | | CURTAIN |



- ### KEYS TO INSTRUMENTS
- ETC S4 LUSTR SERIES 2 19" @ 171w
 - ETC S4 LUSTR SERIES 2 26" @ 171w
 - ETC S4 LUSTR SERIES 2 36" @ 171w
 - ETC S4 19" @ 750w
 - ETC S4 26" @ 750w
 - ETC S4 36" @ 750w
 - ETC S4 50" @ 750w
 - ETC S4 70" @ 750w
 - ETC S4 19" @ 575w
 - ETC S4 26" @ 575w
 - ETC S4 36" @ 575w
 - ETC S4 50" @ 575w
 - ETC S4 ZOOM 25"-50" @ 575w
 - ETC S4 PAR WFL @ 575w
 - SELECON ACCLAIM 4" FRESNEL @ 500w
 - ALTMAN 4.5X6 @ 575w
 - ALTMAN 6X9 @ 575w
 - ALTMAN 6X12 @ 575w
 - ALTMAN PARCAN MFL @ 1kw
 - ALTMAN PARCAN WFL @ 1kw
 - ALTMAN 3" FRESNEL @ 100w
 - PRACTICAL
 - CHROMA Q COLORFORCE 12 @ 120w
 - HES SOLAFRAME 750 @ 270w
 - DMX IRIS
 - 18" SIDARM
 - ROSSCO I-CUE
 - RGWB LED TAPE
 - S4 SPOT ATTACHMENT
 - TOPHAT FOOTPRINT
 - RADIANCE HAZER
 - BOOM BASE
 - FLOOR BASE



SUBMISSIONS

| REV | DATE | NOTE |
|-------|------------|--|
| REV 1 | 2018.10.17 | PRELIMINARY SUBMISSION-BCH |
| REV 2 | 2018.10.18 | PRELIMINARY SUBMISSION REVISED-BCH |
| REV 3 | 2018.10.18 | PRELIMINARY SUBMISSION REVISED 6PM-BCH |
| REV 4 | 2018.10.25 | COLOR AND TEMPLATES SUBMISSION-BCH |
| REV 5 | 2018.10.31 | MINOR NOTES & REVISIONS-JEJ |
| REV 6 | 2018.11.11 | POST-PRIORITY REVISIONS-JEJ |
| REV 7 | 2018.11.26 | CURTAIN REVISIONS-JEJ |



GABARET

FORUM THEATER

DIRECTOR & CHOREOGRAPHER.....ANNE MCALEXANDER
 SCENIC DESIGN.....JACOB BROWN
 COSTUME DESIGN.....XINGTONG LI
 LIGHTING DESIGN.....BENTLEY HEYDT
 PRODUCTION ELECTRICIAN.....PIPER KIRCHOFFER
 ASSOC. LIGHTING DESIGNER.....JENNINGS JOHNSON

- ### NOTES
- SPACING 1'-6" UNLESS NOTED, TIC MARKS DENOTE 1'-6" SPACES.
 - 2-FER WITHIN CHANNELS.
 - PLEASE PROVIDE SPARE CIRCUITS ON ALL POSITIONS.
 - PLEASE HAVE ALL COLOR, TEMPLATES, AND ACCESSORIES INSTALLED THE START OF FOCUS.
 - PLEASE HAVE SPARE R119 AND R132 ON HAND.
 - PLEASE HAVE BLACKWRAP AND BLACKTAK ON HAND.
 - PLEASE HAVE EXTRA BARN DOORS AND TOP HATS ON HAND.
 - PLEASE DRESS CABLE IMMACULATELY.
 - ALL TRIMS TAKEN FROM CENTER OF PIPES.
 - ALL TAILDOWN DIMENSIONS MEASURED FROM SIDE ARMS.
 - FOOTPRINTS DENOTE APPROXIMATE LOCATION OF UNIT.
 - NO SUBSTITUTIONS WITHOUT DESIGNER APPROVAL.
 - ALL UNITS ON TAILDOWNS AND LADDERS RECEIVE TOP HATS.
 - PLEASE COVER NECESSARY SPILL FROM ALTMAN FIXTURES.
 - SIDE ARMS ARE 18" UNLESS OTHERWISE NOTED.

DISCLAIMER

THIS DRAWING REPRESENTS VISUAL CONCEPTS AND CONSTRUCTION SUGGESTIONS ONLY. IT DOES NOT REPLACE THE KNOWLEDGE AND ADVICE OF A LICENSED STRUCTURAL ENGINEER. THE DESIGNER IS UNQUALIFIED TO DETERMINE THE STRUCTURAL APPROPRIATENESS OF THIS DESIGN AND WILL NOT ASSUME RESPONSIBILITY FOR IMPROPER ENGINEERING OR USE.

| | |
|------------------------------|-------|
| SCALE: 1/2"=1'0" | DWG # |
| DRAWING BY: B.C. HEYDT | 1 |
| DRAWING DATE: 2018.11.11 JEJ | OF 4 |

GRID & LX PLOT